

## Graphi-Q Control Via SIA SmartLive Software

All Sabine Graphi-Qs can be controlled using the free GRQ-Remote Software, or with SIA's SmartLive Testing and Measurement software. The Graphi-Q control interface is included with the SmartLive installation CD, and using the any Graphi-Q as the selected audio device is simply a matter of choosing it from the Device Menu.

Once the GRQ device is selected, you can control all the principal GRQ functions from within SmartLive. Figure 1 shows the device control for one channel of Graphi-Q (you can control up to 16 channels). Control is available here for the FBX Feedback Exterminator®, parametric, and graphic EQ filters, as well as the bypass matrix, channel gain, and preset load and recall. Figure 2 shows the System Control window, which provides control for the Delay, High and Low cut filters, Compressor/limiter, and the Global Parameters for the FBX and graphic EQ filters.

The main SmartLive interface also includes default controls for many of the standard audio functions. When the Graphi-Q is selected as the external device, these controls will apply to the Graphi-Q. For example, you can control the filters and delay quite easily without opening the GRQ device window.

For more information and a free download of GRQ Remote Software, please visit [www.Sabine.com](http://www.Sabine.com). And for more information on SmartLive, please visit [www.Siasoft.com](http://www.Siasoft.com).



### GRQ Remote

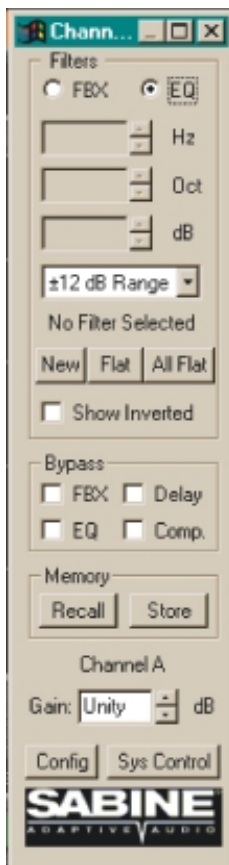


Figure 1

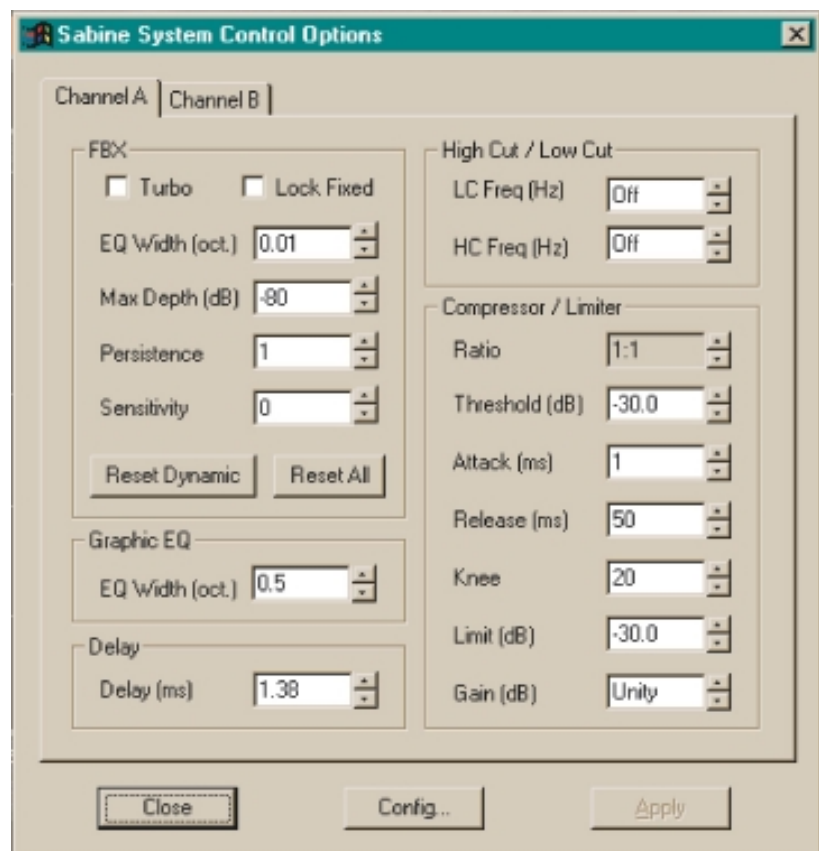


Figure 2