

### Creating a Navigator Network

#### Ethernet connection instructions for -EN version Navigators

Your -EN version Navigator can be controlled through a standard Ethernet: connection. This option allows for control of up to 16 Navigators in one session of Navigator Remote Software.

There are three main procedures for creating your Navigator network. The first is patching your hardware, the second is assigning IP addresses to the Navigators, and the third is connecting your network using the Navigator software. You only have to do this once. From then on you will simply choose Connect and you will be controlling your network.

#### Hardware and Connections

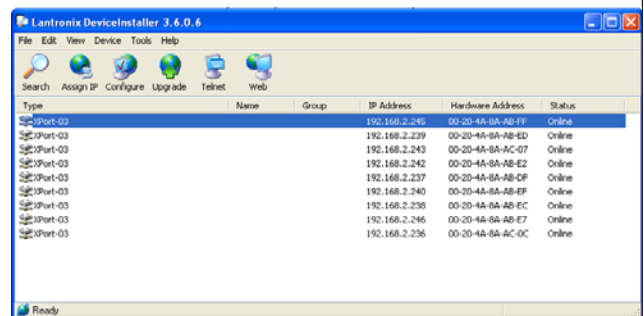
- 1. Network Switch:** In order to create your Navigator network you will need a network switch. This device comes in a variety of configurations. Choose one that has enough ports to accommodate all your Navigators plus the computer you will use for control. The maximum number of ports you will need is 17. Many companies offer switches, including NetGear, D-Link, 3Comm, Belkin, and Cisco.
- 2. Navigators:** Press the System key on the front panel and scroll through the menus to the General Menu. Choose the Port parameter and change it to CAT-5.
- 3. Ethernet cables:** Connect your computer's network card to a port on the switch with a standard Ethernet cable (RJ45 connectors). Connect each Navigator's network connection to a port on the switch using standard Ethernet cables.

SYSTEM-SETUP	MENU: General
FREQ MODE : 36	Steps/Oct
DELAY UNIT : ms	
DEVICE# : 1	PORT:CAT-5

Front panel LCD showing correct port setting

#### Assign Navigator IP addresses using DeviceInstaller

- 1. Install the Lantronix DeviceInstaller software.** This software requires that your computer has .NET Framework 1.1 or higher. The DeviceInstaller utility comes on your Navigator CD (Navigator Ethernet Installer), or you can download it from Sabine.com. It does not make an icon on your desktop, so you must run it from Start - Programs.
- 2. Make sure your connections are made** as described in the Hardware & Connections section above.
- 3. Run DeviceInstaller.**
- 4. Click on the 'Search' button** in DeviceInstaller. The connected Navigator(s) will be listed in the window. The Hardware Address shown is also displayed on the back panel of the Navigator.
- 5. Select the first Navigator** and click the 'Assign IP' button.
- 6. Select 'Assign a Specific IP address'** in the dialog and click 'Next'
- 7. Enter the desired IP address,** subnet mask (255.255.255.0 in all cases), and default gateway (0.0.0.0 in all cases) and click 'Next.'



DeviceInstaller main screen showing 9 Navigators with IP addresses successfully assigned

- We recommend you follow this format for your IP addresses: **198.168.2.xxx**
- Choose any set of numbers in place of xxx. The network order of your Navigators depends on the sequence of these numbers, so plan accordingly. Device 1 in your Navigator network will be the lowest numbered IP address. Make a note of the complete address of each device - you will need this later.
- If you are incorporating this Navigator network into an existing network, please consult your system administrator before assigning IP addresses. Assigning an already existing address can cause your network to crash!

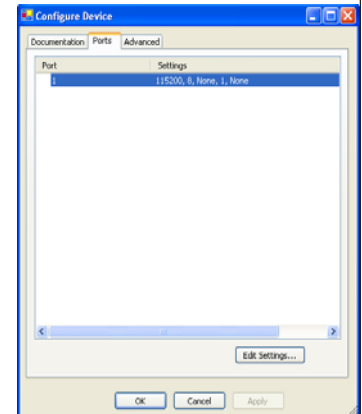
Continued on next page

### Creating a Navigator Network

#### Ethernet connection instructions for -EN version Navigators

##### Assign Navigator IP addresses using DeviceInstaller (Continued)

8. Click the 'Assign' button
9. Select the same Navigator in the main window again and click the 'Configure' menu button
10. Select the 'Ports' tab and click 'Edit Settings'
11. Change the Baud Rate to 115200, Data bits to 8, Parity to None, Stop bits to 1, and Flow Control to None. Click 'OK'
12. Repeat both procedures for all connected Navigators, making sure that each has a unique IP address.
13. Close DeviceInstaller. The Navigator(s) should now be ready for Ethernet connection.



Configuration screen in DeviceInstaller

##### Run Navigator Software and Connect to your Network

1. Run the Navigator software and choose 'Connection.'
2. Select 'Live Mode,' then select 'Network.'
3. Enter the IP addresses for all your Navigators. Make sure you use the same ones you assigned in the previous section. The order of your Navigators follows the numerical order of the IP addresses, so you can set the order in which you would like them to appear at this point. Choose 'OK.'
4. Navigators in your network will begin to connect, indicated by the bright green window in each device in the main screen. Choose the device you wish to control, and you are ready to go.
5. Save your setup! Choose 'Save Setup' and create a file. This will save all those IP addresses. You can load this file on another computer if you need to control the same Navigator network.
6. While in network mode the Link function is enabled. You can link all the main functions across devices and channels.



Main screen in Navigator Software, showing Connection window with IP addresses assigned and 10 devices present. Device 1 is not connected.