

Loading Programs into your Navigator

Your Navigator comes with a few Configuration settings, available in the Systems menu on the Config page. These are Stereo 2-Way, Stereo 3-Way, and Stereo 4-Way. Now you can load a greater variety of useful programs using the files available for download from our web site. Here is how to do it. Point your browser to http://www.sabine.com/sabine-professional-audio/Navigator_Main.htm.

1. Download the ZIP file for your model (3600, 4800, 8800), and save it where you can find it on your computer.

2. Using WinZip, extract the files to the Sabine folder that was created when you installed your Navigator software. Once these are extracted you will see individual program files (*.xdt) and a file that stores all these programs (*.xlt).

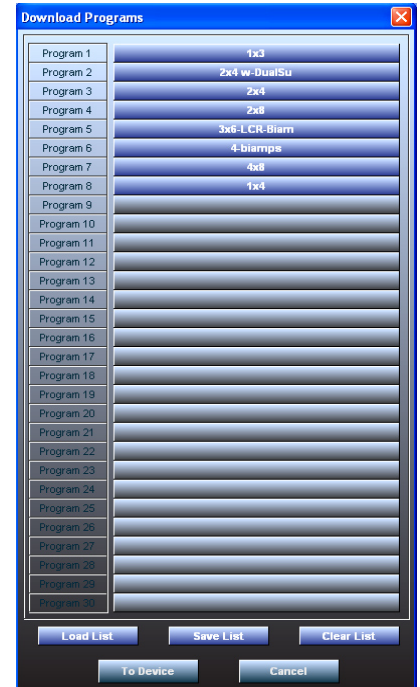
3. You can use the programs in two ways: load them one at a time as files in Navigator Remote Software, or transfer all of them to your Navigator device and have access to them as programs from the front panel.

4. **Load Individual Files:** Run the Navigator Remote Software, connect to your Navigator, and choose "Open File" from the main screen. You will find the individual files (*.xdt) in each of the NAV3600, NAV4800, and NAV8800 directories. Load the file and you are ready to use the program. You may edit it as much as you wish, and save it with a new name using the "Save File" button.

5. **Transfer all Programs to the Navigator Device:** Run the Navigator remote software, connect to your Navigator, and choose "To Device" from the main screen. You are in the Download Programs window (see screen shot at right) and you will see a list of the 30 possible programs you can load into the Navigator. You can manually load each of the downloaded programs by selecting them one at a time. Or you can load the whole list of presets using the *.xlt file, as follows:

- Select "Load List" and choose the *.xlt file from the appropriate directory. The file name should match your Navigator (for example, 4800*.xlt for the NAV4800 or NAV4800-EN).

- All the presets in that file will now show in the Download Programs window (there will be from 6 to 8). Choose the "To Device" button and the programs will begin transferring to your Navigator. The status box at lower right in the main screen will show the progress, and the front panel will display the progress, too.



6. When the transfer is complete you can choose the programs from either the front panel or the software. From the front panel push the System/Enter button and the first menu is the Recall programs menu. From the software choose the "Recall Prog" button, which accesses programs stored in the Navigator Device. For more information, see the note below on Navigator File Types.

A word about Navigator file types

Using your computer as a platform gives you unlimited memory storage of Navigator files. There are **three types of files** associated with the Navigator:

- **XDT files:** These files are the equivalent of one of the 30 programs that can be stored within the Navigator. All parameters for one Navigator are stored in a .XDT file. You can store as many of these as you need on your PC. These are accessed using the **Open File** or **Save File** buttons in Navigator software. To store your work directly in the Navigator as a program, choose **Store Prog** or **Recall Prog**.

- **XLT files:** These files store a listing of 30 Navigator programs. Store and recall these using the Download function in Navigator software. Think of these files as a way to store all 30 programs of a Navigator in one place. This can be handy if you need to make a backup of everything stored within the Navigator. Or you may want to categorize your programs according to applications. These can be downloaded to the Navigator all at once using XLT files. Use the upload function to move the 30 programs from the Navigator to your PC. The default location for these files is the Sabine/Navigator directory on your PC.

- **XST files:** These files are for storing and recalling all parameters not directly associated with Navigator functions. Links, window positions, and network information is stored in an XST file. Access these using Open Setup or Save Setup. The most common use for this file type is to save all the IP information when you create a Navigator Network (-EN versions only).